

## A Structured Implant Therapy Approach in the Molar Region With SPI®ELEMENT RC



Dr. Christopher Köttgen,  
Dr. Ina Köttgen, Germany

First published in:  
Quintessenz  
Zahnmedizin.  
2021;6:664-76.



### The Baseline Situation

Patient with significant hard- and soft tissue loss

A 61-year-old female patient in good general health presented at the dental clinic with the wish to improve the appearance of her anterior teeth. However, she had not received proper periodontal maintenance over years, and also complained about bad breath and mobility of several teeth. Clinical and radiological assessment revealed significant loss of hard- and soft tissue in addition to positional anomalies with negative effects on the temporomandibular muscles.



### The Treatment Strategy



#### 1 Extraction and regenerative therapy

Extraction of teeth not worth preserving (18,25,26,37,38,47) and rehabilitation of insufficient restorations

Periodontal pretreatment on preserved teeth

Regenerative therapy of tooth 45 with questionable prognosis



#### 2 Initial aligner therapy with parallel bone augmentation

Determining of functionally relevant parameters (e.g Bennett angle, Bennet movement, etc.)

Correction of orthodontic findings with aligner therapy

3D bone augmentation procedure with external sinus floor elevation in regio 25-27. Use of modified Khoury-technique with xenogenic bone plates and autologous bone<sup>1</sup>



#### 3 Implantation

Implantation of 2 SPI®ELEMENT RC INICELL® (PF 4.0 and 5.0) implants 5 months after bone augmentation

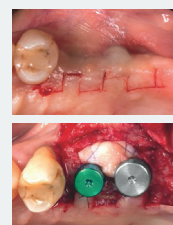
Submerged healing



#### 4 Connective tissue grafting

Three months after implantation, exposure of implants with the Mäander-technique<sup>2</sup>

Thickening of peri-implant mucosa with a mucosal flap sutured to gingivaformers



#### 5 Prosthetic restoration

Restoration with screw-retained individualized monolithic abutment crowns on titanium bases

Individualized ceramic- and partial crowns

Covering of recession in regio 21 and 22 with a subgingival connective tissue graft according to Allen<sup>3</sup>

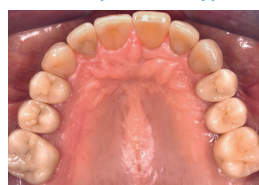


### The Outcome

Therapeutic safety and a structured approach by the clinician, as well as a high level of patient motivation, led to a long-lasting success with the applied treatment concept.

The patient denied further esthetic improvements, for example in regio 43 or 13-23, due to economic- and time considerations and fear of losing her familiar appearance.

Immediately after therapy



3.5 years after therapy

