

There are many
**providers of dental
implants.**



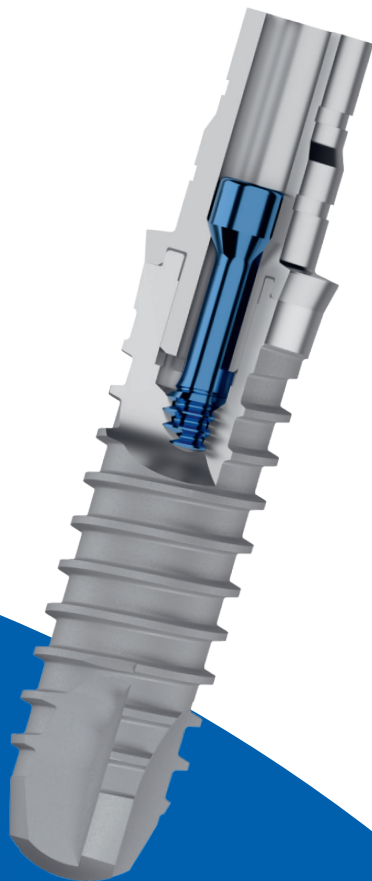
But only one
like **Thommen**
Medical.



Driven by science, not trends.

The focused **dental implant experts**

Trying to do too many things at once means that you can never pay enough attention to any one thing. That's why our approach has always been crystal clear and our long-standing tradition marks us out from the competition – we are the dedicated dental implant experts. At Thommen Medical we apply our tradition of Swiss innovation and precision to just one area, and one area only, with focused expertise: dental implantology.



The development of the Thommen Medical Dental Implant System began for us by listening to the clinical needs of dental professionals in order to achieve long-lasting, successful patient outcomes. We have been working closely with clinical and scientific experts ever since to ensure that the system benefits from technological and clinical advances as well as scientific discoveries – and not merely reacting to passing marketing trends. With Thommen Medical you have a focused dental implant expert, one which is a leader in research, innovation and manufacturing technology. As an independent company, our focus is on a proven and comprehensive product portfolio. We are motivated by science and can provide our customers with personal contacts and individual solutions.

The success of each of our customers, and the well-being and satisfaction of every patient, lie at the heart of what we do. That's why we treat our customers as partners – it's a lifetime commitment!



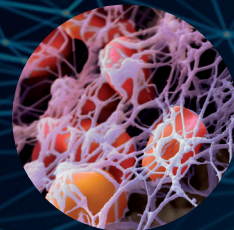
Exceptional and reliable: Our evidence- based¹ implant system

Our implant system is based on the exceptional and reliable “MULTIGUARD Protection Solution” concept, which has been clinically optimized over the last three decades. This combination of innovative design features, which guarantee the mechanical integrity of the implant and ensure optimal biological conditions, will last a whole life long.

INTEGUARD® Matrix

for optimal bone conditions

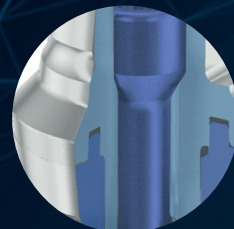
The INICELL® implant surface makes a more rapid osseointegration possible. INICELL® is the superhydrophilic surface condition of our well-proven sandblasted and acid-etched implant surface.



EVERGUARD® Connection

for long-term mechanical stability

The highly precise EVERGUARD® connection with hexagon and stabilization ring ensures the long-term stability of the implant-abutment connection.



TISSUEGUARD® Collar

for optimum soft tissue conditions

The machined TISSUEGUARD® implant collar favors the adaptation of soft tissue and prevents bone loss.

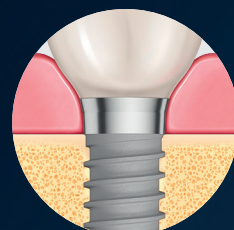


Photo: © Martin Oeggerti /
www.microneut.ch

Reliable: A long-term partnership at your side

Working together with Thommen Medical is truly something special: our focus, dedication and close connection with our customers mean that we can offer you a personalized service. We provide solutions to the clinician's problems: we focus on your needs. Innovation and creativity are the sources of our success, and only the best long-term results are acceptable. As our mutual goal is a continuous improvement in your patients' quality of life, both functionally and esthetically.

First class: Our leading experts

Every patient should have access to the best solution available. So, in order to keep our finger on the pulse of the times, we work closely with international leading dentists, dental technicians and renowned academic institutions, including Ueli Grunder, Markus Hürzeler, Konrad Meyenberg and Mauro Merli. They not only help us with research and development activities, they also support our education and training programs. Our products can also be customized in line with your treatment concepts.



Dr. U. Grunder
Zurich-Zollikon, CH

"It's proven to be even better when it's done together with users."



Prof. Dr. M. Hürzeler
Munich, DE

"The machined collar for biological security."



Dr. K. Meyenberg
Zurich, CH

"Ideal conditions for optimal tissue integration."



Dr. M. Merli
Rimini, IT

"Simplicity, flexibility and precision."

Precise and safe: Our quality promise

At Thommen Medical we develop and produce our products in our own facility in Grenchen, Switzerland. The safety of our products is our top priority. That's why we guarantee our customers the highest product quality by using up-to-date manufacturing and measuring technology. Our qualified employees, partners and suppliers ensure that all processes are continuously being refined in compliance with the regulatory requirements. We can thus guarantee Swiss precision all the way through from product development to distribution to meet the most exacting standards.



Headquarters, Grenchen



Video portrait
**See what we do for
yourself –
take a look behind
the scenes:**



Simply scan
this code with your
Smartphone and experience
Thommen Medical "live".

Your contact
**We look forward to
talking to you!**

Headquarters

Thommen Medical AG
Neckarsulmstrasse 28
2540 Grenchen | Switzerland
Tel. +41 61 965 90 20
Fax +41 61 965 90 21
info@thommenmedical.com